

# CHRISTMAS FAYRE

Celebrate Christmas with us at The Stonebridge Inn  
Available 1<sup>st</sup> - 23<sup>rd</sup> December



## To Start

Home-made Ham & Vegetable Broth served with a mini tin loaf

Chorizo Garlic Mushrooms cooked in a garlic white wine cream served with garlic bread

Prawn Cocktail on a bed of mixed leaves topped in a marie rose dressing with brown bloomer

Deep Fried Breaded Brie on a bed of tomato, onion and beetroot salad



## To Follow

Succulent Butter Basted Turkey Crown  
with mashed and roast potatoes, pigs in blankets,  
yorkshire pudding, sage & onion sausage meat  
stuffing, seasonal vegetables and our delicious  
home-made gravy

Pan Fried Salmon Fillet with a chilli & coconut  
cream served with buttered new potatoes and  
seasonal vegetables

Slow Cooked Shin of Beef cooked in a creamy  
peppercorn sauce served with garlic & herb roast  
potatoes and seasonal vegetables

Oven Roast Bell Pepper stuffed with mushroom  
risotto and topped with parmesan cheese with  
crushed new potatoes and seasonal vegetables

Bookings Secured with a Pre Order and £5.00  
Deposit Per Person

Table Size Subject to Government Advice

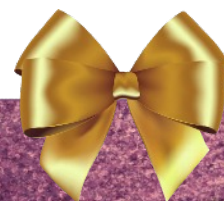
## To Finish

Strawberry Swirl Cheesecake  
with vanilla ice-cream

Christmas Pudding  
with home-made brandy cream

Warm Chocolate Fudge Cake  
topped with chocolate sauce and served  
with vanilla ice-cream

Assortment of Ice-creams  
with fresh cream and strawberry sauce



2 Courses - £19.95

3 Courses - £24.95

# Christmas Fayre Pre Order

Christmas Fayre Pre Order														
Name	Broth	Garlic Mushrooms	Prawn Cocktail	Deep Fried Brie		Turkey Crown	Salmon Fillet	Beef Shin	Roast Pepper		Cheesecake	Xmas Pudding	Fudge Cake	Ice cream
EXAMPLE	X					X							X	
TOTAL														

Name .....

Address .....

.....

.....

Telephone ..... Date .....

Time ..... Group Size .....

A £5 Non-Refundable Deposit Per Person is Required at the Time of Booking  
 Available 1<sup>st</sup>-23<sup>th</sup> December  
 Table Size Subject to Government Advice